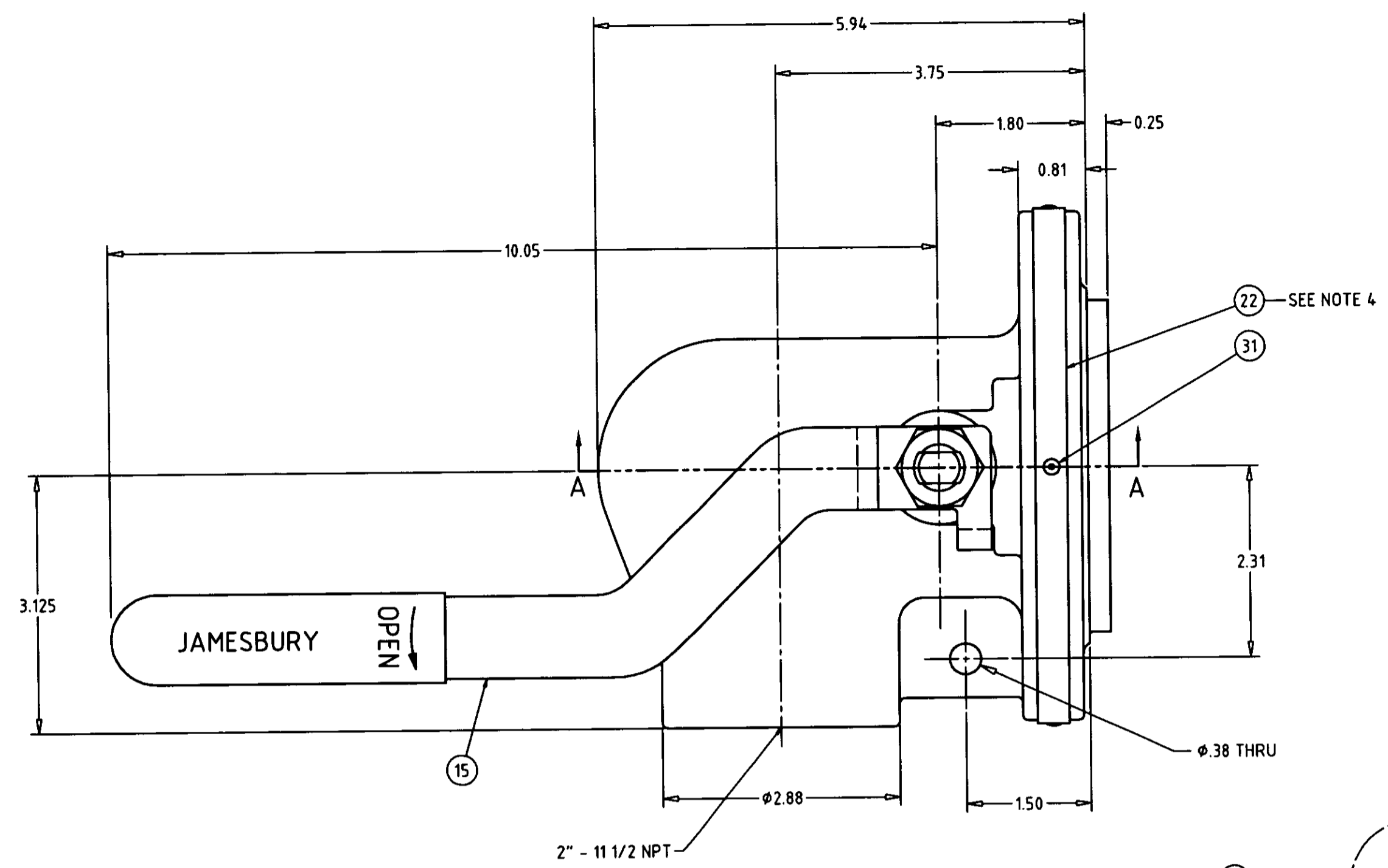
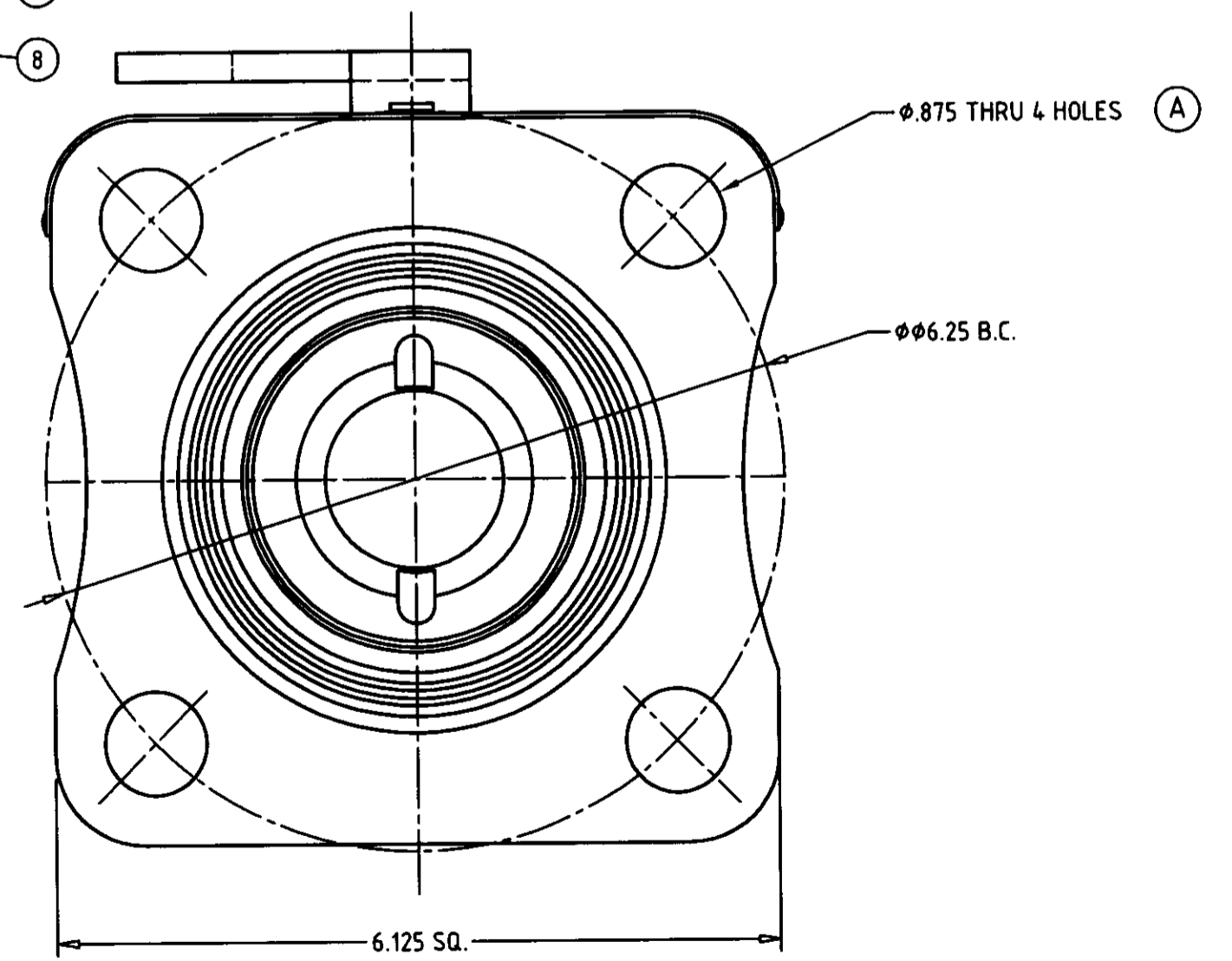
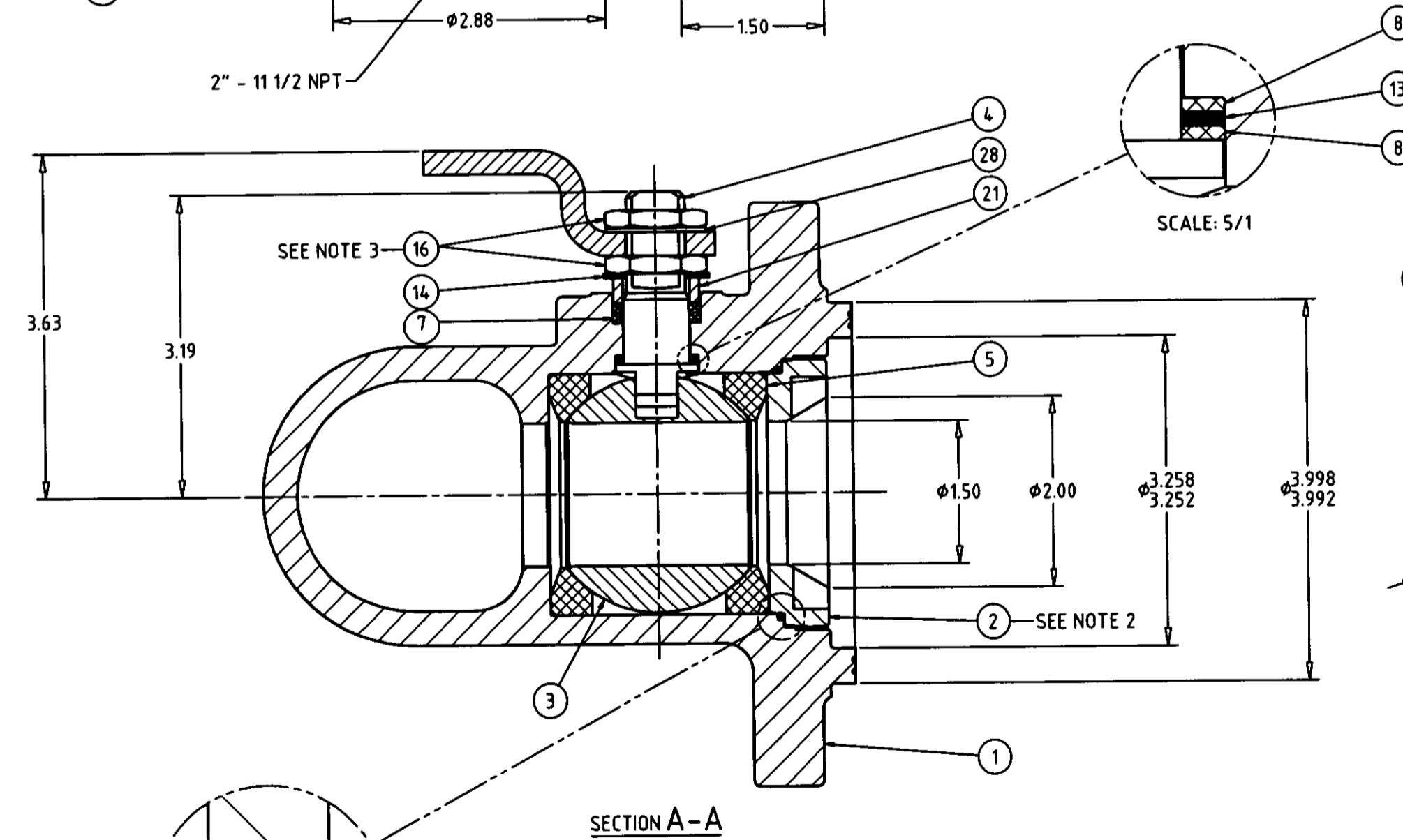


LET	REV	REVISION	DRAWN	APPRD.	DATE
A	17063	Ø0.875 WAS Ø.81	BA	PJD	12 JAN 98
B	17325	IN NOTE 3 TORQUE 160-170 IN-LBS WAS 135-145 IN-LBS	BA	SAL	16 DEC 98
C	18271	UPDATED BODY CASTING GEOMETRY	BA	PJD	21 MAR 02



ITEM NO.	PART NAME	QTY.
1	BODY	1
2	INSERT	1
3	BALL	1
4	STEM	1
5	SEAT	2
6	BODY SEAL	1
7	STEM SEAL	2
8	STEM BEARING	2
13	SECONDARY STEM SEAL	1
14	STEM WASHER	1
15	HANDLE	1
16	STEM NUT	2
21	COMPRESSION RING	1
22	IDENTIFICATION TAG	1
28	SHAKEPROOF WASHER	1
31	POP RIVET	3

- NOTES:
- FOR INSTALLATION, MAINTENANCE, AND OPERATING INSTRUCTIONS SEE IMO-R13.
 - INSERT ASSEMBLY TORQUE: 170 - 200 FT. LBS.
 - STEM NUT ASSEMBLY TORQUE: 160 - 170 IN. LBS.
 - TAG ATTACHMENT PER JMA-98.



THIS DRAWING AND ALL INFORMATION CONTAINED HEREIN ARE THE PROPERTY OF JAMESBURY, INC. AND ARE NOT TO BE USED EXCEPT AS AUTHORIZED BY JAMESBURY, INC.

UNLESS OTHERWISE NOTED DIMENSIONS, TOLERANCES, & DRAWING INTERPRETATION IS IN ACCORDANCE WITH ASME Y14.5M.

FILES - 07 FROM -

REVISE SHARP EDGES AND CORNERS TO R. - 0.015 UNLESS OTHERWISE SPECIFIED.

NATIONAL CODE	NATIONAL TYPE	NATIONAL SPECIFICATIONS	SCALE
		DO NOT SCALE DRAWING	1:1

DATE FROM PART NO. JSA-54 JMA-98

TITLE: ASSEMBLY 2" SRNT RAILROAD ANGLE BALL VALVE CCW TO OPEN

DRAWN	DATE	APPRD.	DATE
PJD	9/11/97	RET	9/11/97

SIZE D DWG NO 5300

JAMESBURY
HELER CONTROLS GROUP
WORCESTER MA., U.S.A.

SHEET 1 OF 1